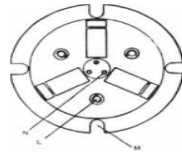
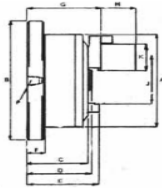
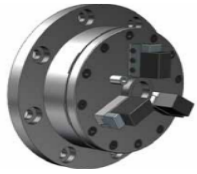


## Diaphragm Chucks



SERIES	A	B	C	D	E	F	G	H	J	K	L	M	N	P
E.M. 160	160 MM.	200 MM.	68.5 MM.	15 MM.	85.5 MM.	17 MM.	85.5 MM.	47 MM.	78-00 MM. 78-05 MM.	40 MM.	(3) 6MM. S.I. THD EQUISPACED ON 90 MM. P.C.D	4 SLOTS 12MM. EQUISPACED ON 175 P.C.D.	(3) 6 MM. S.I. THD. EQUISPACED ON 185 M.M. P.C.D	1/4 N.P.T.
E.M. 200	200 MM.	250 MM.	74 MM.	80 MM.	89 MM.	18 MM.	89 MM.	60 MM.	111-0 MM 111-05 MM.	60 MM.	(3) 8MM. S.I. THD EQUISPACED ON 125 MM. P.C.D	4 SLOTS 12MM. EQUISPACED ON 225 P.C.D.	(3) 6 MM. S.I. THD. EQUISPACED ON 29 MM P.C.D.	1/4 N.P.T.
E.M. 250	250 MM.	305 MM.	80.5 MM.	86 MM.	97 MM.	20 MM.	97 MM.	71 MM.	135 MM. 135-05 MM.	76 MM.	(3) 8MM. S.I. THD EQUISPACED ON 150 MM. P.C.D.	4 SLOTS 15 MM. EQUISPACED ON 275 P.C.D.	(3) 6 MM. S.I. THD. EQUISPACED ON 50 MM P.C.D	1/4 N.P.T.
E.M. 315	315 MM.	375 MM.	89 MM.	97 MM.	107 MM.	22 MM.	107 MM.	80 MM.	19-0 MM. 190-05 MM.	80 MM.	(3) 8MM. S.I. THD EQUISPACED ON 206 MM. P.C.D.	4 SLOTS 15 MM. EQUISPACED ON 340 P.C.D.	(3) 8 MM. S.I. THD. EQUISPACED ON 54 MM P.C.D.	1/4 N.P.T.
E.M. 400	400 MM	470 MM.	114 MM.	120 MM.	140 MM.	25 MM.	140 MM.	90 MM.	210-0 MM. 210-05 MM.	90 MM.	(3)10 MM. S.I. THD. EQUISPACED ON 228 MM. P.C.D.	4 SLOTS 20 MM. EQUISPACED ON 355 P.C.D.	(3) 8 MM. S.I. THD. EQUISPACED ON 70 MM P.C.D.	1/4 N.P.T.

SERIES	DIAPHRAGM DIAMETER	NO. OF JAWS	GRIPPING RANGE	GRIPPING PRESSURE AT 50 P.S.I.	MAXIMUM GRIPPING PRESSURE AT 80 P.S.I.
E.M.160	160 MM (6 <sup>3</sup> / <sub>4</sub> )	3	3MM TO 76 MM (1/8" TO 3")	1,000 LB.	1,400 LB.
E.M.200	200 MM (7 <sup>7</sup> / <sub>8</sub> )	3 OR 6	12MM TO 120 MM (1/2" TO 3 <sup>3</sup> / <sub>4</sub> )	1,600 LB.	2,300 LB.
E.M.250	250 MM (9 <sup>7</sup> / <sub>8</sub> )	3 OR 6	25.5MM TO 152 MM (1" TO 6 1/2")	2,600 LB.	3,900 LB.
E.M.315	315 MM TO (12 <sup>7</sup> / <sub>8</sub> )	3 OR 6	70MM TO 203MM (3" TO 8")	4,000 LB.	6,100 LB.
E.M.400	400 MM (15 <sup>3</sup> / <sub>4</sub> )	3 OR 9	114MM TO 266 MM (4 <sup>1</sup> / <sub>2</sub> TO 10 <sup>1</sup> / <sub>2</sub> )	6,500 LB.	9,800 LB.